

OFFSHORE CONNECTION

FINGAL

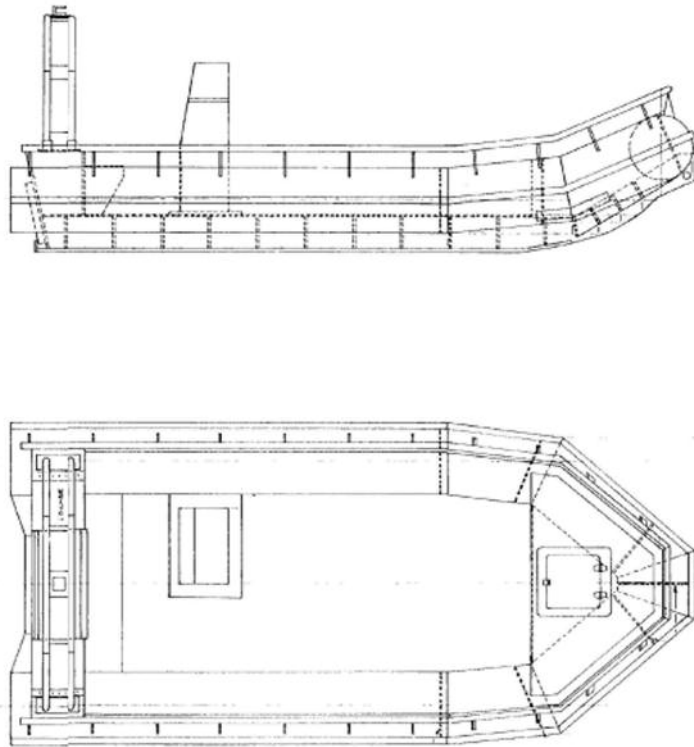
Fingal is a Sea Rover 18. It was built for the Northern Lighthouse Vessel Pole Star and was kept in very good condition. The H.D.P.E. structure is a very hard wearing material which allows for safe landing on rugged structures or shorelines. It is available MCA cat 4 coded if required. The large deck area can carry up to 1,150kg. The boat has its own trailer so can be delivered to sites around Scotland.

- Self draining deck
- Great for landing on rough shore lines
- Very shallow draft
- Can be transported by road *(photo below)*
- Large cargo capacity for its size, very buoyant
- Hard wearing H.D.P.E.
- Trailer available
- Category 4 coding
- Lifting eyes (ex NLB tender)
- Suzuki 4 stroke 90hp, fuel efficient
- Auxiliary engine
- Camera mounts



FINGAL SPECIFICATIONS

MANUFACTURER		Sea Rover Boats
HULL		High Density Polyethylene (H.D.P.E.)
LENGTH		5.5m
BREADTH		2.0m
DRAFT		0.3m
ENGINE		Suzuki 90
DRIVE		Outboard
MCA CATEGORY		Cat 4
ELECTRONICS		Icom 411 vhf, Garmin Chart Plotter
SPEED (Knots)		26 cruising
LOAD CAPACITY		1,150kg



All skippers and crew are experienced and qualified to carry out a range of different services.
All requirements can be catered for. Please contact us to charter Fingal.

Please contact us if you require any further information

OFFSHORE CONNECTION *(is the commercial sector of Coastal Connection LLP)*

t: 01631 565 833 m: 07919 615210 – 24/7
info@offshore-connection.co.uk

www.offshore-connection.co.uk

